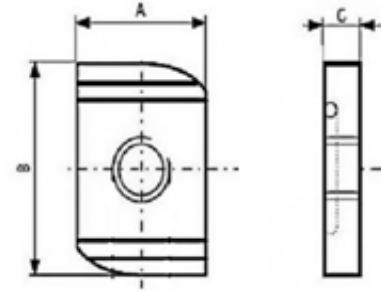


Plain Channel Nuts



Plain Channel Nuts						
Thread	M6	M8	M10	M12	M12	M16
A	19	19	19	19	19	19
B	34	34	34	34	34	34
C	6	8	8	8	9	12

Material	
Mild Steel	Zinc Plated (CR3)
Mild Steel	Hot Dip Galvanised

INFORMATION AND DRAWINGS PROVIDED ARE FOR REFERENCE ONLY